

Human/Mouse/Rat Activin A Protein



Cat. No. ACV-HM001

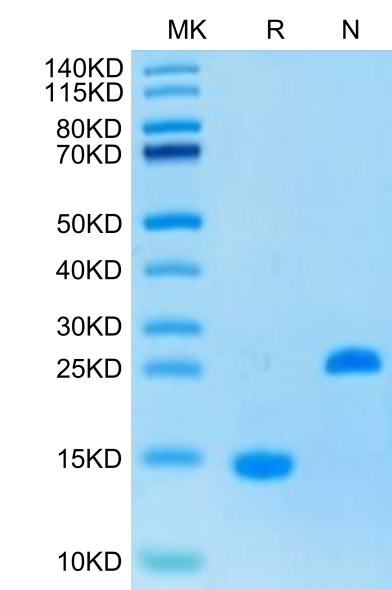
| Description      |   |
|------------------|---|
| Source           | Recombinant Human/Mouse/Rat Activin A Protein is expressed from HEK293 without tag.<br>It contains Gly311-Ser426.   |
| Accession        | P08476  |
| Molecular Weight | The protein has a predicted MW of 12.97 kDa. Due to glycosylation, the protein migrates to 14-15 kDa under reduced (R) condition, and 23-25 kDa under Non reducing (N) condition based on Bis-Tris PAGE result. |
| Endotoxin        | Less than 0.1EU per µg by the LAL method.   |
| Purity           | > 95% as determined by Bis-Tris PAGE  |

| Formulation and Storage |   |
|-------------------------|---|
| Formulation             | Lyophilized from 0.22µm filtered solution in 4mM HCl. Normally 8% trehalose is added as protectant before lyophilization.   |
| Reconstitution          | Dissolve the lyophilized protein in 4mM HCL. Please refer to the Certificate of Analysis for detailed instructions.   |
| Storage                 | -20 to -80°C for 12 months as supplied from date of receipt.-80°C for 3 months after reconstitution.Recommend to aliquot the protein into smaller quantities for optimal storage. Please minimize freeze-thaw cycles. |

| Background   |  |
|--|--|
| Activin-A, a member of the TGF-β superfamily, Extensive research over the past decades illuminated fundamental roles for activin-A in essential biologic processes, including embryonic development, stem cell maintenance and differentiation, haematopoiesis, cell proliferation and tissue fibrosis. Activin-A signals through two type I and two type II receptors which, upon ligand binding, activate their kinase activity, phosphorylate the SMAD2 and 3 intracellular signaling mediators that form a complex with SMAD4, translocate to the nucleus and activate or silence gene expression. |  |

Assay Data

Bis-Tris PAGE

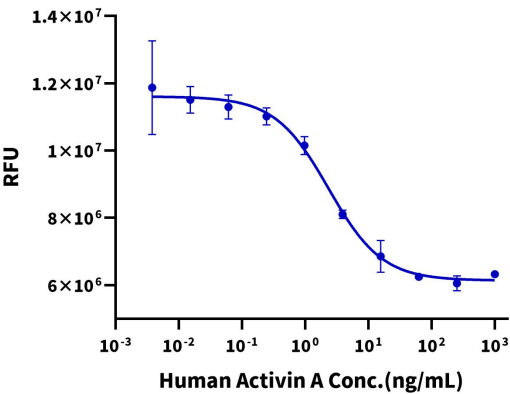


Human/Mouse/Rat Activin A on Bis-Tris PAGE under reduced (R) condition and Non reducing (N) condition. The purity is greater than 95%.

Cell Based Assay

Assay Data

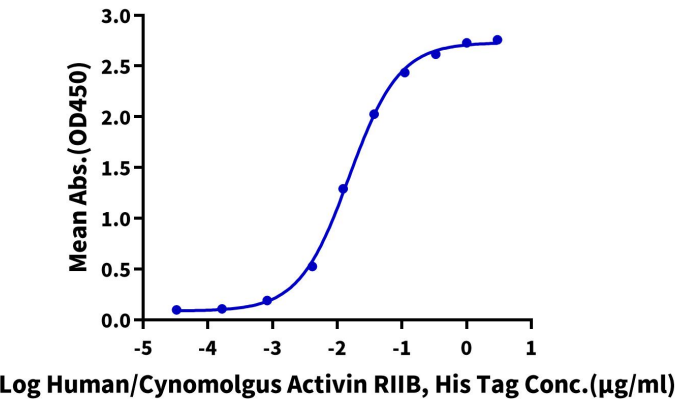
Recombinant Human Activin A Bioactivity



Measured by its ability to inhibit proliferation of MPC-11 cells. The ED50 for this effect is < 7 ng/mL (QC Test).

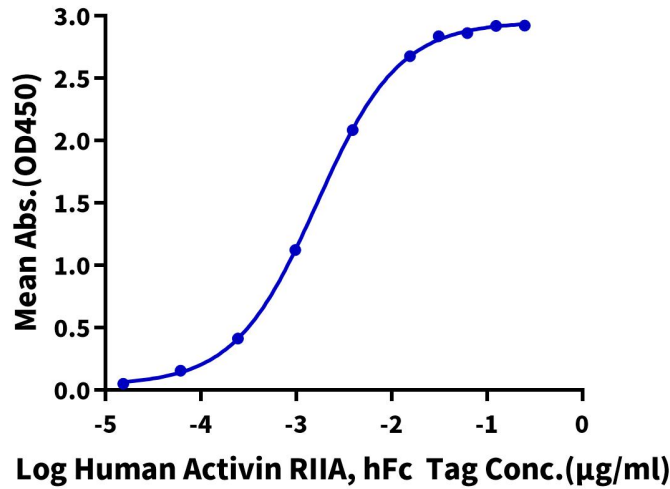
ELISA Data

Human Activin A, No Tag ELISA  
0.1µg Human Activin A, No Tag Per Well



Immobilized Human/Mouse/Rat Activin A, No Tag at 1µg/ml (100µl/well) on the plate. Dose response curve for Human/Cynomolgus Activin RIIB, His Tag with the EC50 of 15.3ng/ml determined by ELISA (QC Test).

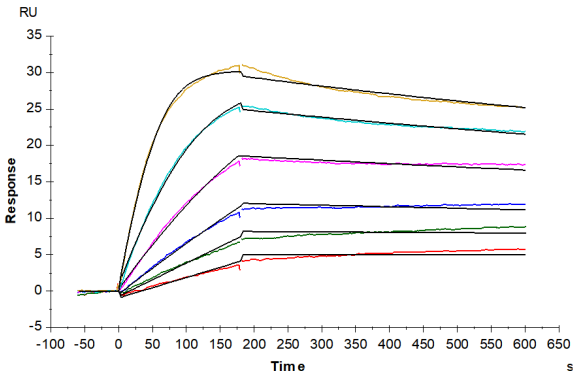
Human Activin A, No Tag ELISA  
0.1µg Human Activin A, No Tag Per Well



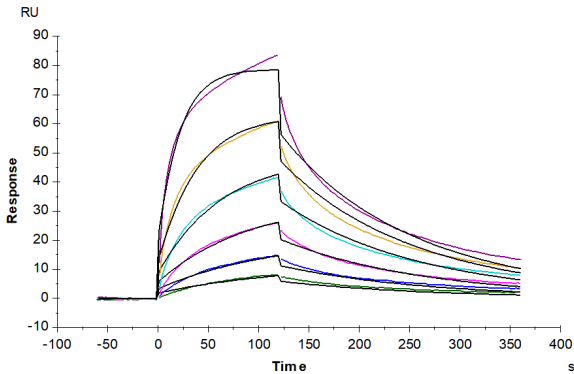
Immobilized Human/Mouse/Rat Activin A, No Tag at 1µg/ml (100µl/well) on the plate. Dose response curve for Human/Cynomolgus Activin RIIA, hFc Tag with the EC50 of 1.6ng/ml determined by ELISA.

SPR Data

Assay Data



Biotinylated Human/Cynomolgus Activin RIIB, His Tag captured on CM5 Chip via Anti-His Antibody can bind Human/Mouse/Rat Activin A, No Tag with an affinity constant of 55.35 pM as determined in SPR assay (Biacore T200).



Human ACVR1B, His Tag captured on CM5 Chip via Anti-His Antibody can bind Human Activin A, No Tag with an affinity constant of 18.43 nM as determined in SPR assay (Biacore T200).